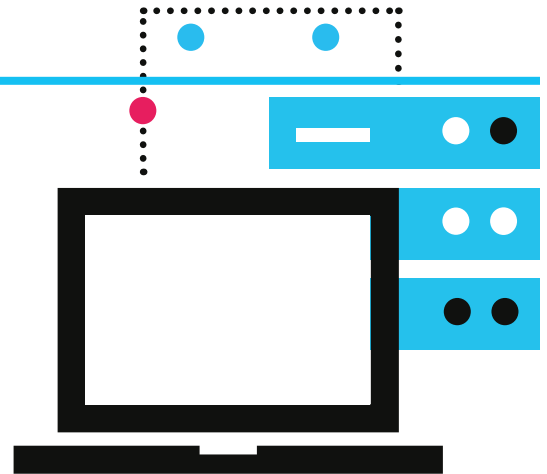


Solutions for IT Infrastructure

HPE NonStop Products Overview



Performance management for HPE NonStop is built to optimize the performance and availability of your business-critical applications.

Key benefits

01

Provides a holistic view of all HPE NonStop components through a single 'pane of glass'

02

Generates automatic reports to save time and resources

03

Assists with software auditing

04

Assists with capacity planning

05

Supports cross platform CI-Ready environments

06

Integrates key performance and availability data with enterprise management frameworks

07

Reduces manual tasks via automation

08

Supports network, storage and telco CLIMS

- ✓ **Scalable**
Designed to support the needs of the largest enterprise, financial institution and service provider (MSP) environments.
- ✓ **Fault-tolerant**
Built-in redundancy that eliminates points of failure and ensures system management continuity.
- ✓ **Deep drill down views**
Analyzes the core of your systems and applications and generates alerts against defined thresholds, allowing fast problem isolation and troubleshooting.
- ✓ **Real-time visibility**
Advanced out-of-the-box and custom displays, thresholds, charts, graphs and reports to deliver relevant information when you need it.
- ✓ **Efficient performance monitoring**
Distributed architecture allows delivery of real-time metrics at dynamic intervals, filtered at the source and routed to where it is required, keeping network overhead to a minimum

- ✓ **Cost Effective**
Seamlessly integrates with existing infrastructure to ensure a highly efficient, cost effective solution to any business.
- ✓ **Unified, cross platform view**
Single, integrated solution that addresses wide range of management issues seamlessly across HPS NonStop and Distributed environments. giving you a unified view of your server and application infrastructure.
- ✓ **Capacity planning**
Helps maximize the performance of your existing resources and prepare for future expansion.



Infrastructure products for HPE NonStop

NonStop

The package includes:

Performance management: Gives immediate access to real-time performance metrics for key system devices and attached sub-devices.

Disk management: Monitors key disk and file metrics alerting against customized and pre-defined thresholds. Also assists in long-term capacity planning.

Automated operations: Provides a large range of customizable threshold conditions to monitor more than 1,500 system attributes, generates alerts, and allows users to automate system responses to these conditions.

Availability reporting: Save hours of manual data collection and reporting by monitoring processes, applications and hardware components, and using these availability statistics to easily create database, application and system availability reports.

Capacity planning: Automatically collects capacity statistics on a regular basis, highlights capacity trends and issues.

NonStop Plus

The package includes all inclusions in NonStop, and:

Batch management: Monitors the HPE NonStop batch-processing environment, examining the status and performance of batch jobs and generating alerts or taking automated actions when jobs fail.

Automated analyst: Automates multi-step and iterative problem solving using customized or pre-configured rules that analyse and initiate appropriate action to resolve problems.

Enterprise integration: Integrates key performance and availability data from your HPE NonStop systems with enterprise management frameworks, such as IBM Tivoli/Netcool, ServiceNow, and any SNMP trap compatible system.

Application data interface: Extracts and integrates key performance and status information from your commercially developed applications to enable thresholds and initiate automated actions on the data.

NonStop Enterprise

The package includes all inclusions in NonStop and NonStop Plus, and:

Pathway management: Protects your transaction-processing environment against critical failures through real time and historical monitoring of every component of your Pathway application.

Transaction management: Maximises the performance of OLTP environments through management of TMF and minimizes disaster recovery costs through management of RDF.

Software inventory: Registers and tracks changes to all software objects (as per PCI-DSS 11.5), including when the software was last updated or used, as well as changes to file ownership, PROGID and license settings.

Load balancing: Automatically balances the workload between CPUs to ensure your hardware resources are running at optimum efficiency.

MQ management: Provides comprehensive visibility of IBM MQ subsystems, instantly identifying any component in an abnormal state. Also ensures the availability of applications that rely on IBM MQ.

User accounting: Manages service levels and system resources by tracking actual usage rates and costs by user.



For more information
visit [ir.com](https://www.ir.com)

Australia
Tel: +61 (2) 9966 1066

USA
Tel: +1 (303) 390 8700

UK
Tel: +44 (0) 1895 817 800

Singapore
Tel: +65 6813 0851